

## Newsletter July/August 2005

In this newsletter, you'll find:

- 1) **IB EP**
- 2) **MIND Vol. 2 back in stock!**
- 3) **Questions on MIND Vol. 2: Live**
- 4) **Italian interview**
- 5) **Sounds of Eternity live**
- 6) **Ethan Xiphias live**
- 7) **Summer holiday**

\* \* \*

### 1) **IB EP**

Just a short reminder that the EP Songs from the Observatory is out now and the 1000 copies are going like hot cakes (or should that be ice cream considering it's June?).

You can order it from the following dealers:

[www.justforkicks.de](http://www.justforkicks.de)  
[www.recordheaven.net](http://www.recordheaven.net)  
[www.progressrec.com](http://www.progressrec.com)  
[www.lasercd.com](http://www.lasercd.com)  
[www.musearecords.com](http://www.musearecords.com)

\* \* \*

### 2) **MIND Vol. 2: Live finally back in stock!**

Those of you who haven't got Isildurs Bane's live 2-CD MIND Vol. 2: Live can now get it. Not only has this extraordinary double CD arrived, but we have shipped it to our distributors.

\* \* \*

### 3) **Questions on MIND Vol. 2: Live**

Since MIND Vol. 2 is back, I thought it was only appropriate to ask Mats some of the questions you the newsletter readers have been asking for some time now.

- The recordings on MIND Vol. 2 span more than ten years. Which is the oldest recording on the album?

MJ: The oldest recordings must be the interview with Monsieur Rabbaté. We interviewed him in August 1988. On MIND Vol. 2, his

voice is mixed with some of the backing tapes we used during the Cheval tour.

- What's the story behind the Extroversion pieces?

MJ: The Extroversion pieces were meant to be a musical equivalent to turning a page or starting to read a new chapter in a book. When we put the album together, we felt that just adding one song to another made the whole production a bit rich, it was simply too much.

We were looking for something that made the music the album more interesting, something that overlapped the existing tracks. The solution was to mix filmic pieces with voices from our past.

The Extroversion pieces are in themselves a combination of old stuff and new recordings. There are loops which I used for some theatre music but modified with a string sound on a Kurzweil K2000 and a rhythm from a Nord Modular.

- Looking at the pictures in the booklet, you can see Kjell playing what looks like iron tubes. What is he doing?



MJ: Well, they are iron tubes actually. Originally, the idea was to strike them with a hammer or table legs and for them to make different and distinct sounds. Unfortunately, this didn't quite work out they way we planned. The tubes sounded too alike, to put it simply. Instead, I processed the sounds in my computer and made them sound like a synthesizer instead.

Eventually, the iron tubes were used for the first performance of Celestial Vessel on the millennium eve. As a prop and symbol they really work well. If we had more time and if the iron tubes weren't so damn heavy, we might have taken the idea further.

\* \* \*

#### **4) Italian interview**

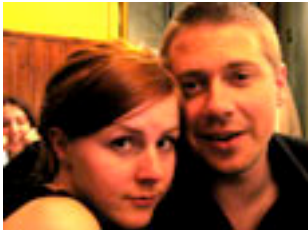
You can find an interview with Mats at <http://www.agarthaprog.com/default.asp?pag=news&id=631>

In this interview, Mats discusses the future, the MIND concept, and the joy of playing in Italy.

The interview is in Italian, but our good friend Marcello has promised me that an English version will be available soon.

\* \* \*

### **5) Sounds of Eternity live**



Linnea and "Gicken" are looking forward to playing in Malmö in August.

Sounds of Eternity, featuring amongst others Fredrik "Gicken" Johansson, Linnea Olsson and Fredrik Davidsson (all well-known to IB fans of course), will play at Hedmanska Gården in Malmö on August 4 at 19.30.

N. B. This is a free concert!

\* \* \*

### **6) Ethan Xiphias live**

Catch Linnea and Mariette live with their band Ethan Xiphias. They play at Bull's Pub in Halmstad every Wednesday and Thursday evening this summer starting today and ending on August 4. You can also catch them in Kristianstad on July 15 and 16.

More information at <http://www.ethanx.com/>

\* \* \*

### **7) Summer holiday**

As you may have noticed, this newsletter covers both July and August. Your trusted newsletter editor will take a summer break and move house. I promise to be back towards the end of August with some exciting IB news!

\* \* \*

Have a great and wonderful summer!

Thomas Olsson  
Newsletter editor

Don't forget to check out website regularly! [www.isildursbane.se](http://www.isildursbane.se)

Do you know anyone who may be interested in receiving newsletters from Isildurs Bane? Send an e-mail to [thomas@isildursbane.se](mailto:thomas@isildursbane.se) and we will put you on our list.

If you want to unsubscribe, send a message to the same address and you will be taken off our list immediately.